

M5 Junction 10 Improvements Scheme

General Arrangement Plans - Part 2 TR010063 - APP 2.9

Regulation 5 (2) (o)
Planning Act 2008
Infrastructure Planning (Applications: Prescribed Forms and Procedure) Regulations 2009

Volume 2
November 2024

THIS PAGE IS LEFT INTENTIONALLY BLANK

Infrastructure Planning Planning Act 2008

The Infrastructure Planning (Applications: Prescribed Forms and Procedure) Regulations 2009

M5 Junction 10 Improvements Scheme Development Consent Order 202[x]

2.9 General Arrangement Plans - Part 2

Regulation Number:	Regulation 5(2)(o)
Planning Inspectorate Scheme Reference	TR010063
Application Document Reference	TR010063 – APP 2.9
Author:	M5 Junction 10 Improvements Scheme Project Team

Version	Date	Status of Version
Rev 0	December 2023	DCO Application
Rev 1	July 2024	Deadline 3
Rev 2	September 2024	Deadline 4
Rev 3	November 2024	Deadline 10

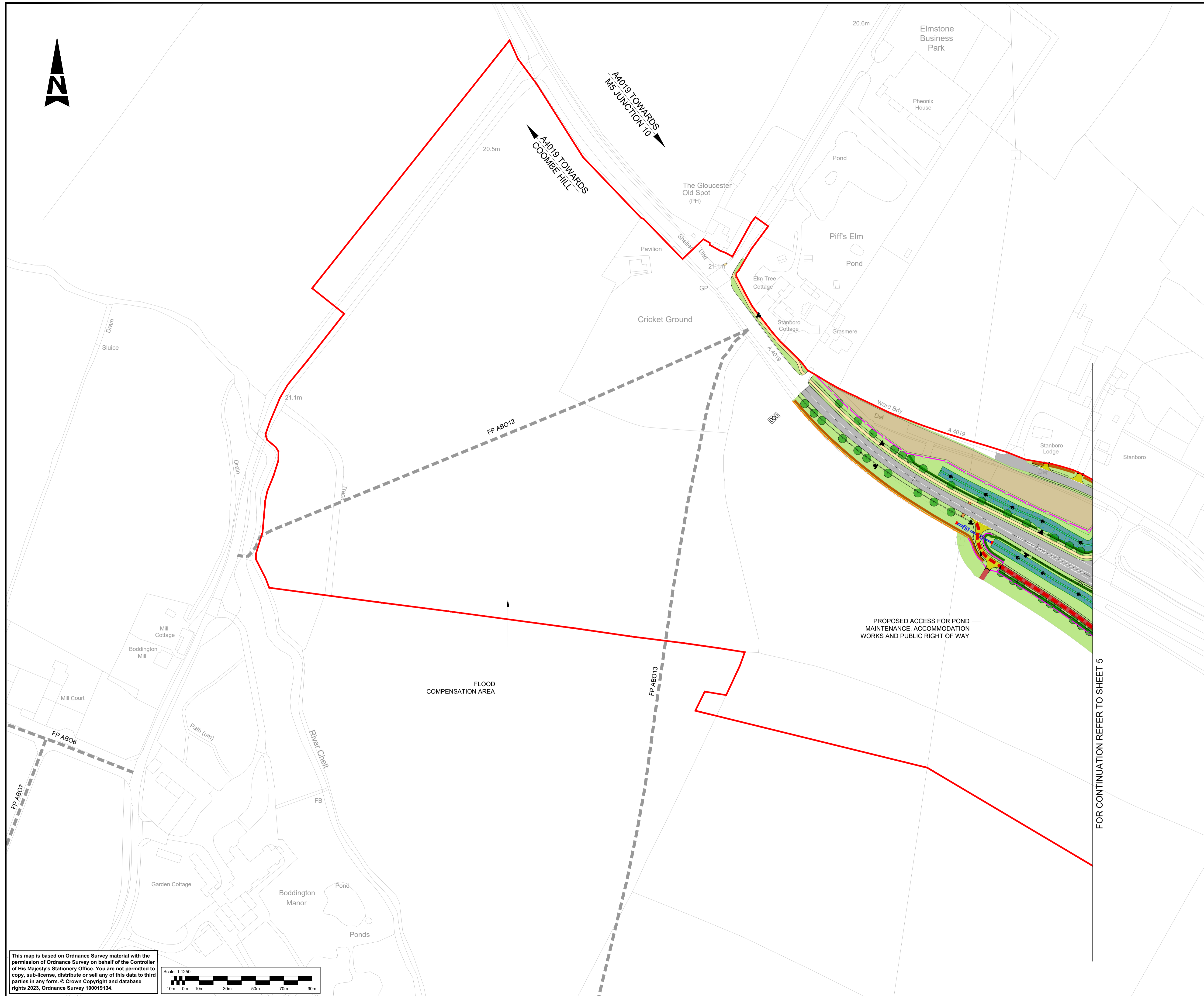
1. Schedule of plans included in the application

1.1. List of drawings in Part 1

Document title	Document number	Version
2.9 General Arrangement Plans – General Overview of the Scheme Regulation 5(2)(o)	TR010063 – APP 2.9	C02 C04
2.9 General Arrangement Plans – Key Plan Regulation 5(2)(o)	TR010063 – APP 2.9	C02 C04
2.9 General Arrangement Plans – Key Legend Regulation 5(2)(o)	TR010063 – APP 2.9	C01
2.9 General Arrangement Plans – Sheet 1 of 16 Regulation 5(2)(o)	TR010063 – APP 2.9	C01
2.9 General Arrangement Plans – Sheet 2 of 16 Regulation 5(2)(o)	TR010063 – APP 2.9	C01
2.9 General Arrangement Plans – Sheet 3 of 16 Regulation 5(2)(o)	TR010063 – APP 2.9	C01
2.9 General Arrangement Plans – Sheet 4 of 16 Regulation 5(2)(o)	TR010063 – APP 2.9	C03 C02
2.9 General Arrangement Plans – Sheet 5 of 16 Regulation 5(2)(o)	TR010063 – APP 2.9	C02 C04
2.9 General Arrangement Plans – Sheet 6 of 16 Regulation 5(2)(o)	TR010063 – APP 2.9	C02 C04
2.9 General Arrangement Plans – Sheet 7 of 16 Regulation 5(2)(o)	TR010063 – APP 2.9	C01
2.9 General Arrangement Plans – Sheet 8 of 16 Regulation 5(2)(o)	TR010063 – APP 2.9	C02 C04
2.9 General Arrangement Plans – Sheet 9 of 16 Regulation 5(2)(o)	TR010063 – APP 2.9	C01
2.9 General Arrangement Plans – Sheet 10 of 16 Regulation 5(2)(o)	TR010063 – APP 2.9	C01

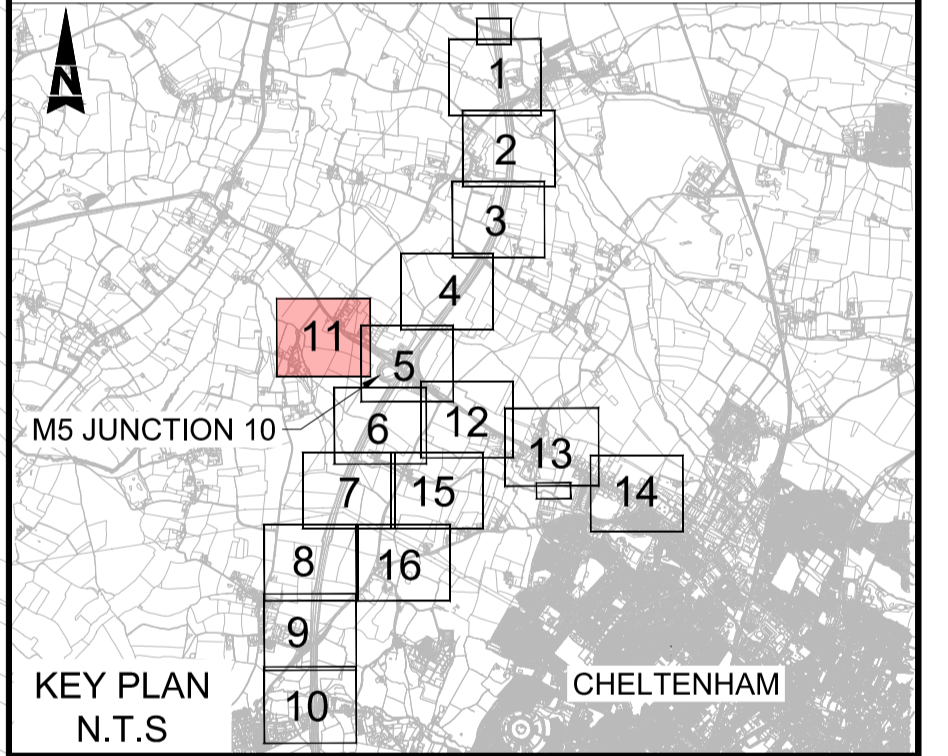
1.2. List of drawings in Part 2

Document title	Document number	Version
2.9 General Arrangement Plans – Sheet 11 of 16 Regulation 5(2)(o)	TR010063 – APP 2.9	C01
2.9 General Arrangement Plans – Sheet 12 of 16 Regulation 5(2)(o)	TR010063 – APP 2.9	C03 C02
2.9 General Arrangement Plans – Sheet 13 of 16 Regulation 5(2)(o)	TR010063 – APP 2.9	C01
2.9 General Arrangement Plans – Sheet 14 of 16 Regulation 5(2)(o)	TR010063 – APP 2.9	C01
2.9 General Arrangement Plans – Sheet 15 of 16 Regulation 5(2)(o)	TR010063 – APP 2.9	C03 C02
2.9 General Arrangement Plans – Sheet 16 of 16 Regulation 5(2)(o)	TR010063 – APP 2.9	C02 C04



NOTES:

- 1. THESE PLANS SHOULD BE READ IN CONJUNCTION WITH TR010063/APP/2.9 KEY PLAN AND TR010063/APP/2.9 KEY LEGEND.
- 2. THESE PLANS SHOULD BE READ IN CONJUNCTION WITH THE DEVELOPMENT CONSENT ORDER AND OTHER APPLICATION PLANS.



KEY PLAN N.T.S

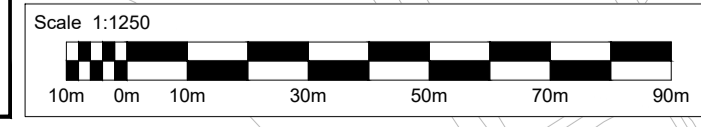
Description	Status	Revision	Drawn	Checked	Reviewed	Authorised	Issue Date
Description							
Description							
Description							
Description							
Description							
FIRST SUBMISSION							
Status	A1	Revision	C01	Drawn	NKRP	Checked	CJ
		Reviewed	HC	Authorised	BM	Issue Date	18/10/23
Drawing Suitability							Status
APPROVED - PUBLISHED							A1

Project Title
M5 Junction 10 Improvements Scheme

Drawing Title
**GENERAL ARRANGEMENT PLANS
REGULATION 5(2)(o)
SHEET 11 OF 16**

Drawing Number		TR010063/APP/2.9	
Original Size	A1	Scale	1:1250
Project Ref. No.	5197035	Sheet	11 of 16
Rev.	C01		

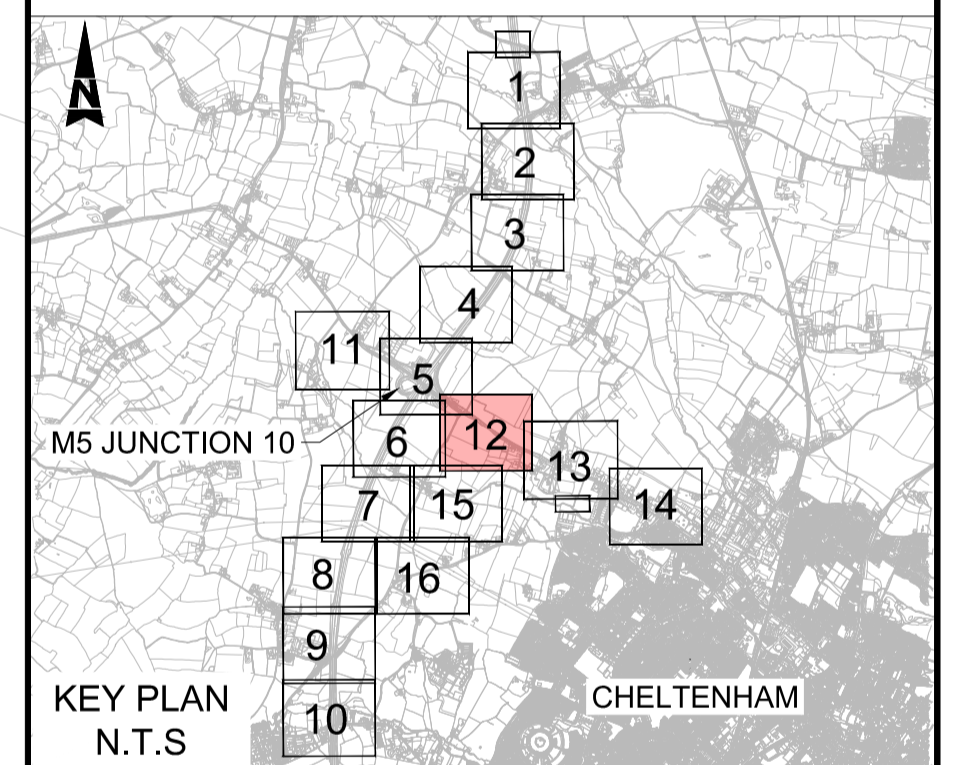
This map is based on Ordnance Survey material with the permission of Ordnance Survey on behalf of the Controller of His Majesty's Stationery Office. You are not permitted to copy, sub-license, distribute or sell any of this data to third parties in any form. © Crown Copyright and database rights 2023, Ordnance Survey 100019134.





NOTES:

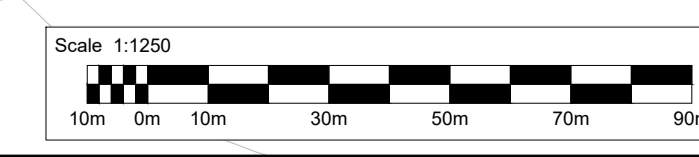
1. THESE PLANS SHOULD BE READ IN CONJUNCTION WITH TR010063/APP/2.9 KEY PLAN AND TR010063/APP/2.9 KEY LEGEND.
2. THESE PLANS SHOULD BE READ IN CONJUNCTION WITH THE DEVELOPMENT CONSENT ORDER AND OTHER APPLICATION PLANS.

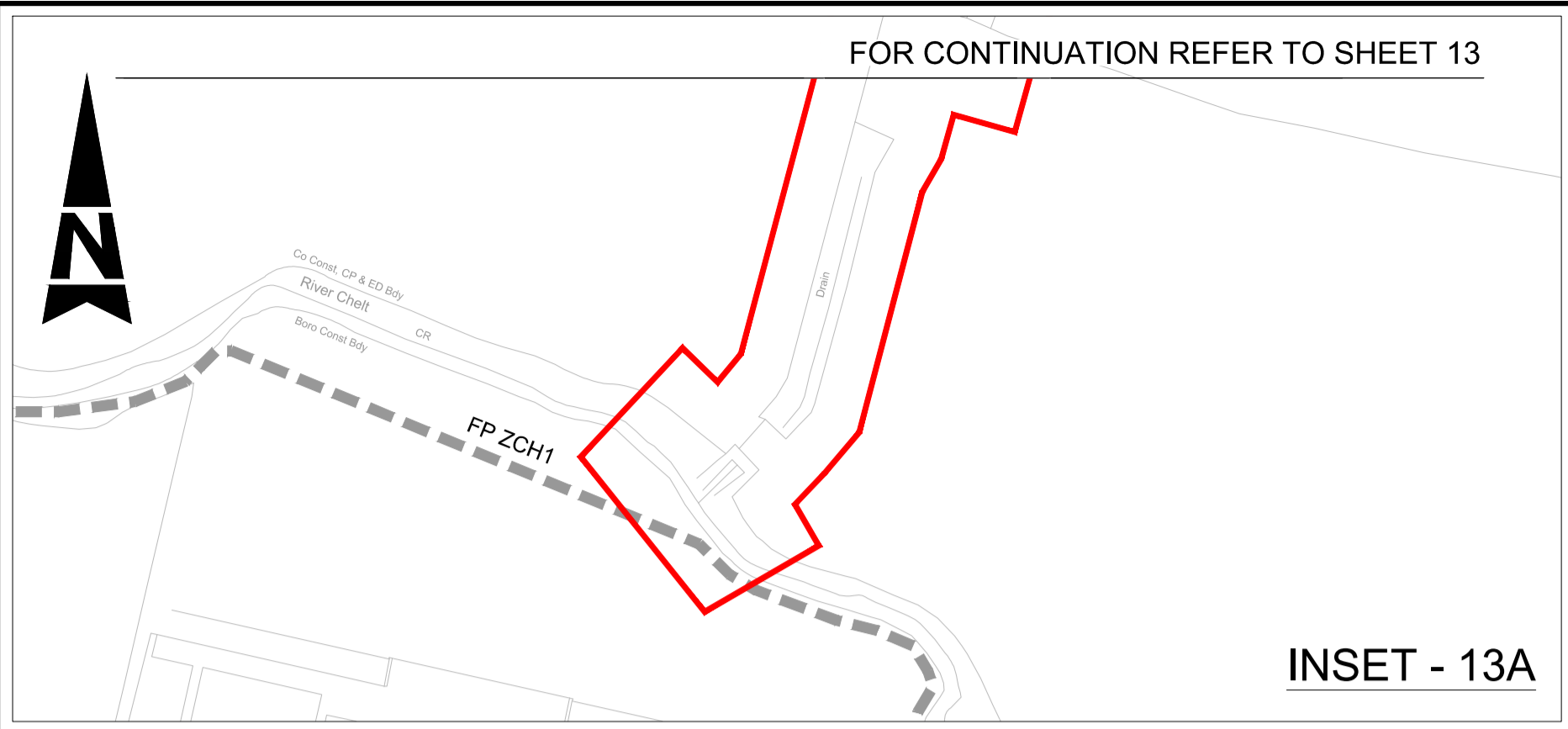
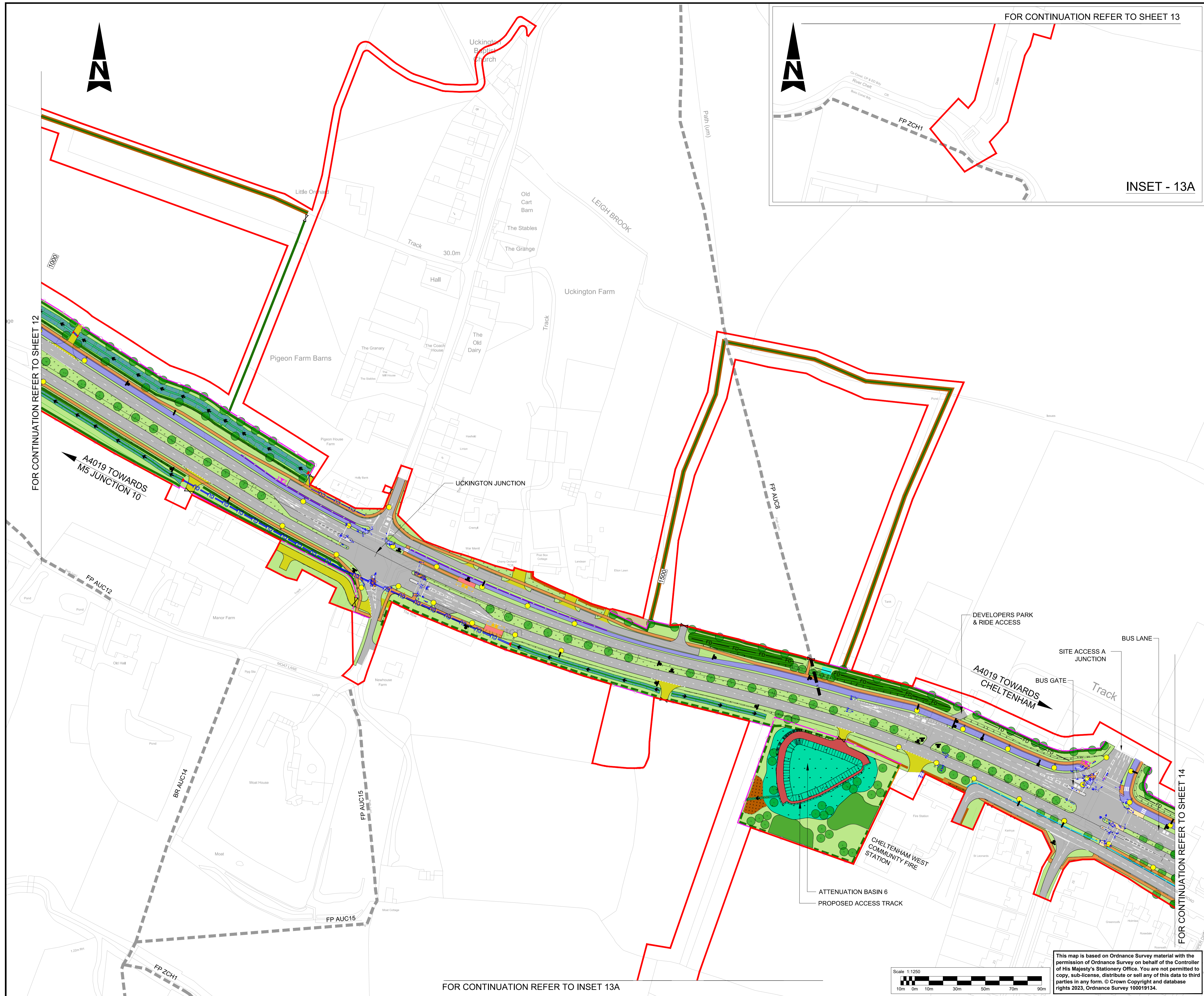


Description	Status	Revision	Drawn	Checked	Reviewed	Authorised	Issue Date
NOT ISSUED	A1	C01	NKRP	NKRP	NKRP	NKRP	21/06/24
MINOR AMENDMENTS	A1	C02	NKRP	CG	CJ	LJ	24/07/24
CHANGE APPLICATION 2 AMENDMENTS INCLUDED	A1	C03	VN	CG	CJ	LJ	24/11/24
Drawing Suitability	APPROVED - PUBLISHED						A1

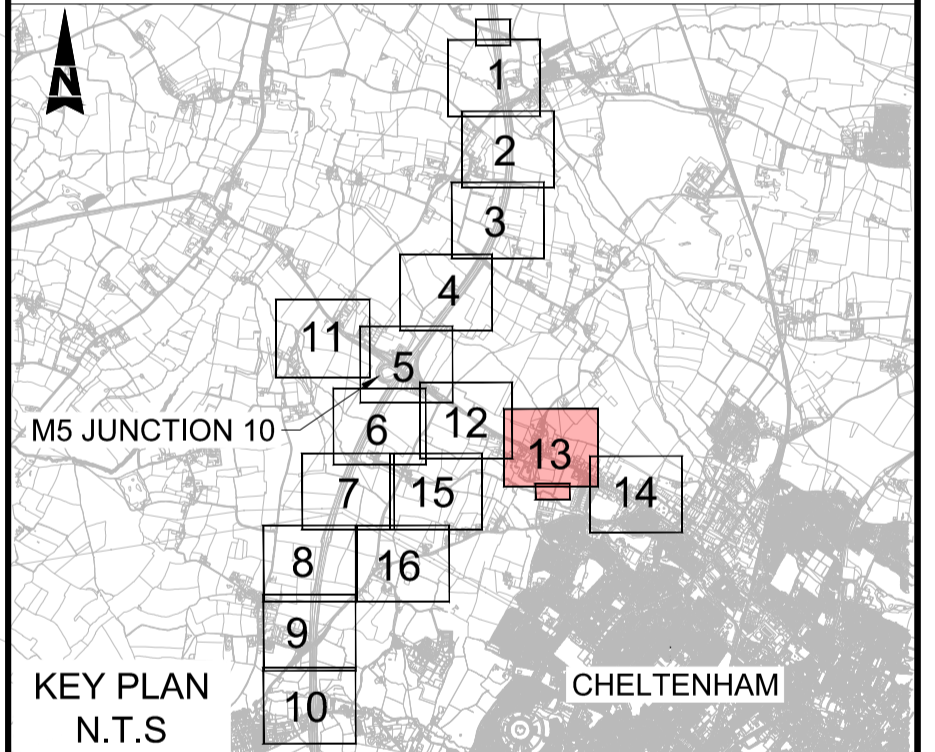
Project Title	M5 Junction 10 Improvements Scheme						
Drawing Title	GENERAL ARRANGEMENT PLANS REGULATION 5(2)(o) SHEET 12 OF 16						
Drawing Number	TR010063/APP/2.9						
Original Size	A1	Scale	1:1250	Project Ref. No.	5228847	Sheet	12 of 16
Rev.	C03						

This map is based on Ordnance Survey material with the permission of Ordnance Survey on behalf of the Controller of His Majesty's Stationery Office. You are not permitted to copy, sub-license, distribute or sell any of this data to third parties in any form. © Crown Copyright and database rights 2024, Ordnance Survey AC0000850000.



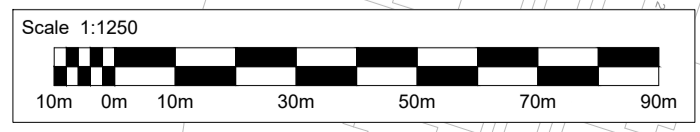


- NOTES:**
1. THESE PLANS SHOULD BE READ IN CONJUNCTION WITH TR010063/APP/2.9 KEY PLAN AND TR010063/APP/2.9 KEY LEGEND.
 2. THESE PLANS SHOULD BE READ IN CONJUNCTION WITH THE DEVELOPMENT CONSENT ORDER AND OTHER APPLICATION PLANS.

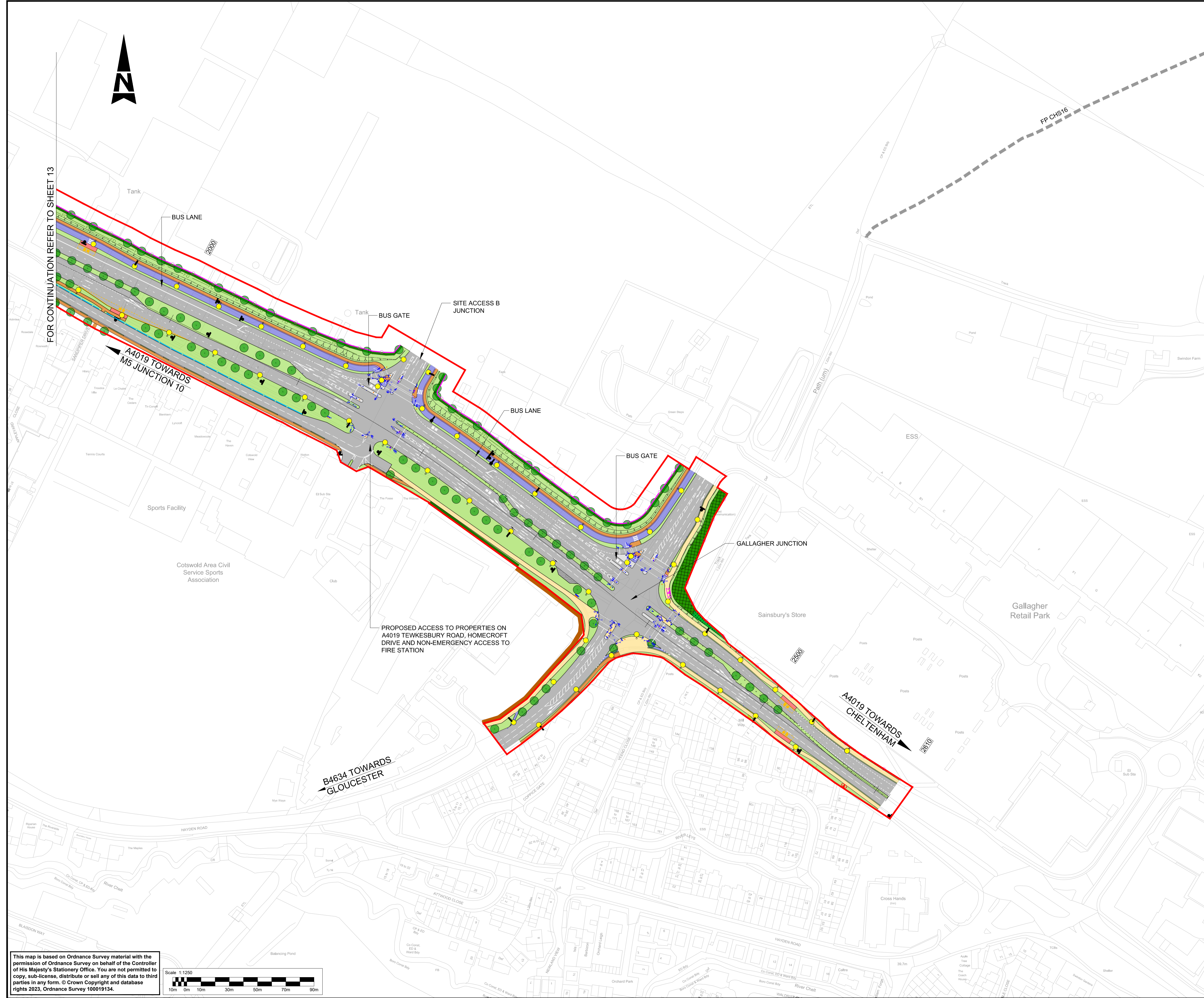


Description						
Status	Revision	Drawn	Checked	Reviewed	Authorised	Issue Date
Description						
Status	Revision	Drawn	Checked	Reviewed	Authorised	Issue Date
Description						
Status	Revision	Drawn	Checked	Reviewed	Authorised	Issue Date
Description						
Status	Revision	Drawn	Checked	Reviewed	Authorised	Issue Date
Description						
FIRST SUBMISSION						
Status	Revision	Drawn	Checked	Reviewed	Authorised	Issue Date
A1	C01	NKRP	CJ	HC	BM	18/10/23
Drawing Suitability						Status
APPROVED - PUBLISHED						A1

Project Title	
M5 Junction 10 Improvements Scheme	
Drawing Title	
GENERAL ARRANGEMENT PLANS REGULATION 5(2)(o) SHEET 13 OF 16	
Drawing Number	
TR010063/APP/2.9	
Original Scale: A1	Scale: 1:1250
Project Ref. No. 5197035	Sheet: 13 of 16
Rev. C01	

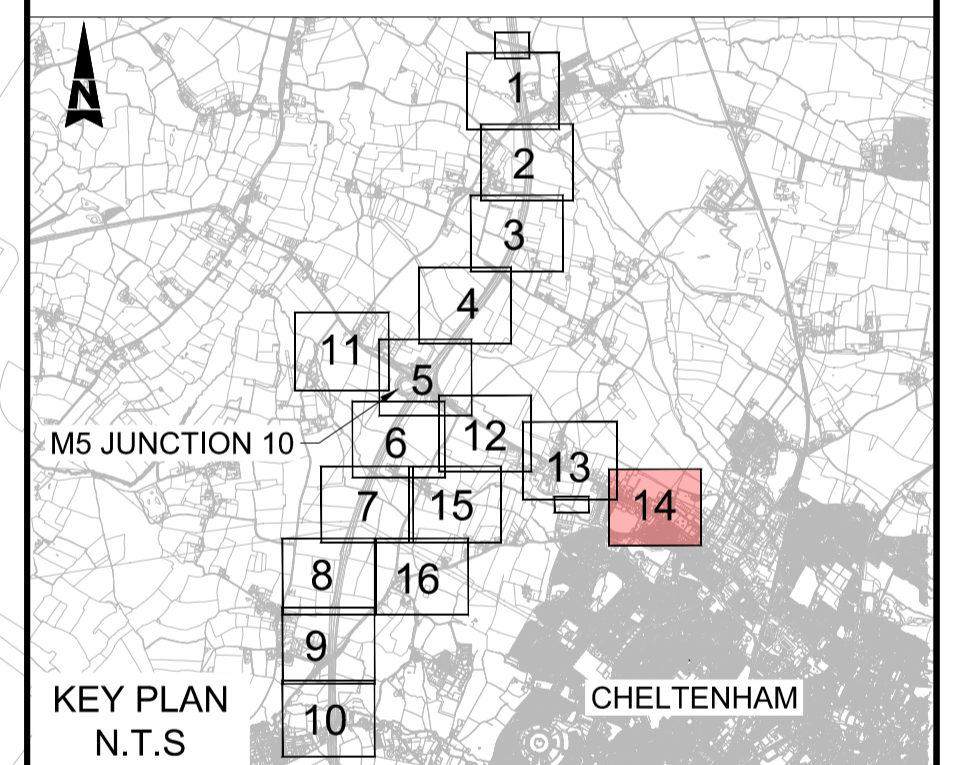


This map is based on Ordnance Survey material with the permission of Ordnance Survey on behalf of the Controller of His Majesty's Stationery Office. You are not permitted to copy, sub-license, distribute or sell any of this data to third parties in any form. © Crown Copyright and database rights 2023. Ordnance Survey 100019134.



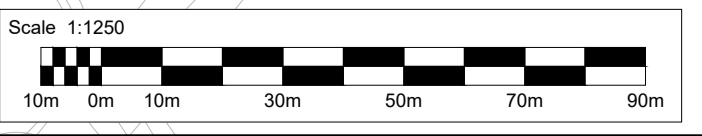
- NOTES:**
1. THESE PLANS SHOULD BE READ IN CONJUNCTION WITH TR010063/APP/2.9 KEY PLAN AND TR010063/APP/2.9 KEY LEGEND.
 2. THESE PLANS SHOULD BE READ IN CONJUNCTION WITH THE DEVELOPMENT CONSENT ORDER AND OTHER APPLICATION PLANS.

FOR CONTINUATION REFER TO SHEET 13



Description						
Status	Revision	Drawn	Checked	Reviewed	Authorised	Issue Date
Description						
Status	Revision	Drawn	Checked	Reviewed	Authorised	Issue Date
Description						
Status	Revision	Drawn	Checked	Reviewed	Authorised	Issue Date
Description						
Status	Revision	Drawn	Checked	Reviewed	Authorised	Issue Date
Description						
FIRST SUBMISSION						
Status	Revision	Drawn	Checked	Reviewed	Authorised	Issue Date
A1	C01	NKRP	CJ	HC	BM	18/10/23
Drawing Suitability						Status
APPROVED - PUBLISHED						A1
Project Title						
M5 Junction 10 Improvements Scheme						
Drawing Title						
GENERAL ARRANGEMENT PLANS REGULATION 5(2)(o) SHEET 14 OF 16						
Drawing Number						
TR010063/APP/2.9						
Original Size:	A1	Scale:	1:1250	Project Ref. No.:	5197035	Sheet: 14 of 16
				Rev:	C01	

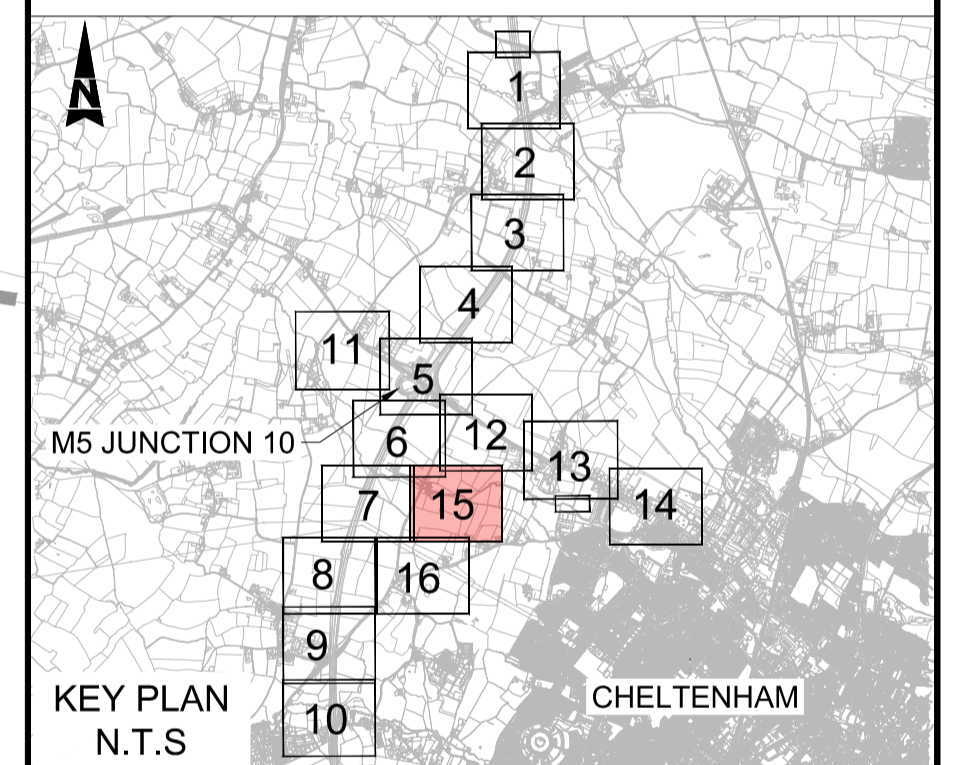
This map is based on Ordnance Survey material with the permission of Ordnance Survey on behalf of the Controller of His Majesty's Stationery Office. You are not permitted to copy, sub-license, distribute or sell any of this data to third parties in any form. © Crown Copyright and database rights 2023, Ordnance Survey 100019134.





NOTES:

1. THESE PLANS SHOULD BE READ IN CONJUNCTION WITH TR010063/APP/2.9 KEY PLAN AND TR010063/APP/2.9 KEY LEGEND.
2. THESE PLANS SHOULD BE READ IN CONJUNCTION WITH THE DEVELOPMENT CONSENT ORDER AND OTHER APPLICATION PLANS.



Revision History

Description	Status	Revision	Drawn	Checked	Reviewed	Authorised	Issue Date
NOT USED	A1	C01	YP	YP	YP	YP	02/07/24
AMENDMENT TO PROW FP AUC11	A1	C02	VN	CG	CJ	LJ	02/09/24
CHANGE APPLICATION 2 AMENDMENTS INCLUDED	A1	C03	VN	CG	CJ	LJ	24/11/24

Drawing Suitability: **APPROVED - PUBLISHED** Status: **A1**

Project Title: **M5 Junction 10 Improvements Scheme**

Drawing Title: **GENERAL ARRANGEMENT PLANS
REGULATION 5(2)(o)
SHEET 15 OF 16**

Drawing Number: **TR010063/APP/2.9**

Original Size: **A1** Scale: 1:1250 Project Ref. No: 5228847 Sheet: 15 of 16 Rev: **C03**



This map is based on Ordnance Survey material with the permission of Ordnance Survey on behalf of the Controller of His Majesty's Stationery Office. You are not permitted to copy, sub-license, distribute or sell any of this data to third parties in any form. © Crown Copyright and database rights 2024, Ordnance Survey AC0000850000.

FOR CONTINUATION REFER TO SHEET 7

FOR CONTINUATION REFER TO SHEET 15



FLOOD COMPENSATION AREA

ETL
ETL
ETL

ATTENUATION BASIN 5
PROPOSED ACCESS TRACK

NEW B4634 FLOOD CULVERTS,
GROUP 2

NEW B4634 FLOOD CULVERTS,
GROUP 1

Elm Cottage

House in the Tree
(PH)

Withybridge
End

Orchard House

The Old Forge

Malyann View

The Grain Barn

Walnut Tree
Cottage

Hayden
Farm

Holmdale

Woodleigh

Def

WITHYBRIDGE LANE

WEST CHELTENHAM LINK
ROAD TOWARDS A4019

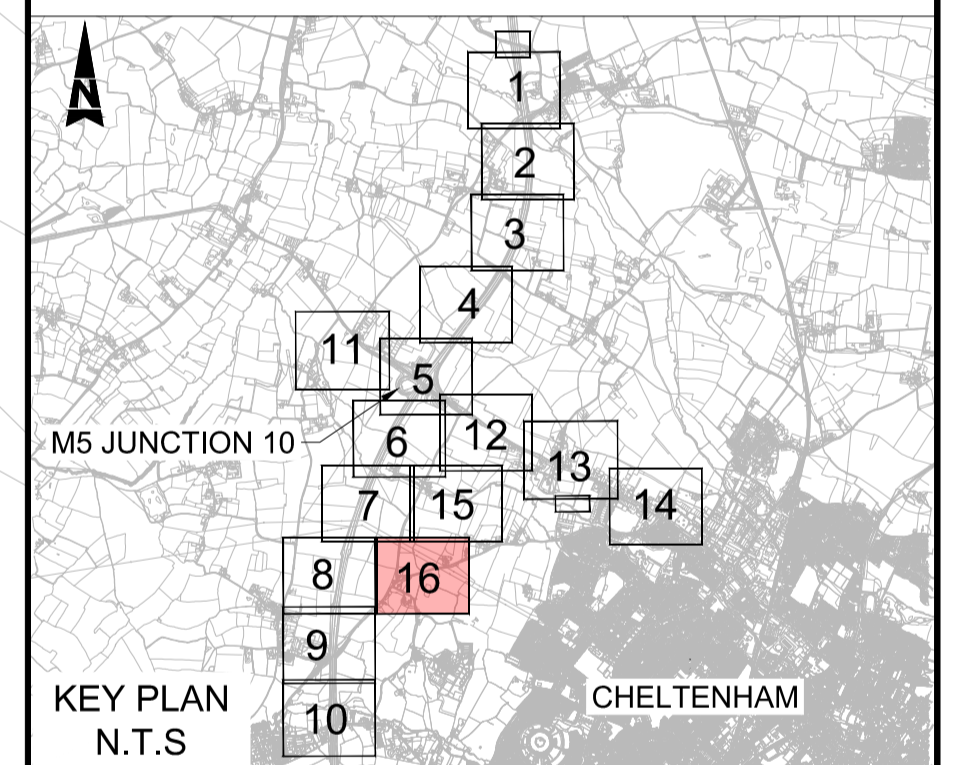
B4634 TOWARDS
A4019

ACCESS TO WEST CHELTENHAM
DEVELOPMENT AREA (GOLDEN VALLEY)

Hayden Hill
Fruit Farm

Hayden Hill

NOTES:
1. THESE PLANS SHOULD BE READ IN CONJUNCTION WITH
TR010063/APP/2.9 KEY PLAN AND TR010063/APP/2.9 KEY
LEGEND.
2. THESE PLANS SHOULD BE READ IN CONJUNCTION WITH THE
DEVELOPMENT CONSENT ORDER AND OTHER APPLICATION
PLANS.



KEY PLAN
N.T.S

CHELTENHAM

Description

Status	Revision	Drawn	Checked	Reviewed	Authorised	Issue Date

Description

Status	Revision	Drawn	Checked	Reviewed	Authorised	Issue Date

Description

Status	Revision	Drawn	Checked	Reviewed	Authorised	Issue Date
NOT USED						

Description

Status	Revision	Drawn	Checked	Reviewed	Authorised	Issue Date
A1	C01	YP	YP	YP	YP	02/07/24

CHANGE APPLICATION 2 AMENDMENTS INCLUDED

Status	Revision	Drawn	Checked	Reviewed	Authorised	Issue Date
A1	C02	VN	CG	CJ	LJ	24/11/24

Drawing Suitability

APPROVED - PUBLISHED

A1

Project Title

M5 Junction 10 Improvements Scheme

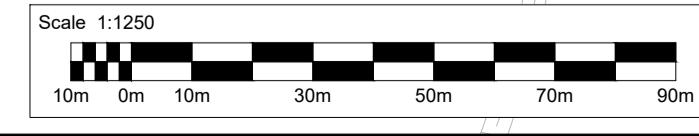
Drawing Title

GENERAL ARRANGEMENT PLANS
REGULATION 5(2)(o)
SHEET 16 OF 16

Drawing Number

TR010063/APP/2.9

Original Scale: A1 Scale: 1:1250 Project Ref. No: 5228847 Sheet: 16 of 16 Rev: C02



This map is based on Ordnance Survey material with the permission of Ordnance Survey on behalf of the Controller of His Majesty's Stationery Office. You are not permitted to copy, sub-license, distribute or sell any of this data to third parties in any form. © Crown Copyright and database rights 2024, Ordnance Survey AC0000850000.

AtkinsRéalis

5th Floor, Block 5
Shire Hall
Bearland
Gloucester
GL1 2TH